

# PLAN A NEW HAMPSHIRE CONFERENCE

## AT STEELE HILL RESORTS



1-800-284-6985 • (603) 524-0500 • FAX: (603) 581-2399  
516 STEELE HILL ROAD • SANBORNTON NH 03269 • STEELEHILLRESORTS.COM





# MEETING BREAKS & LUNCHEONS

## MEETING BREAKS & LUNCHEONS

### FULL DAY MEETING PACKAGE

Per Person. . . . \$32.00

### CONTINENTAL BREAKFAST

Chilled Juice  
Fresh Sliced Fruit  
Muffins, Danish & Bagels  
Coffee, Tea, Decaf

### MORNING BREAK

Coffee, Tea, Decaf, Sodas  
Pastries

### DELI BUFFET

Assorted Breads/Rolls  
Tossed Garden Salad  
Pasta & Tuna Salads  
Assorted Deli Meats & Cheese  
Chef's Dessert  
Ice Tea & Lemonade

### AFTERNOON BREAK

Coffee, Tea, Decaf, Sodas  
Home Baked Cookies

### À LA CARTE - AFTERNOON BREAK ENHANCEMENT

*(priced: each, per piece or by dozen)*

Coffee, Tea, Decaf \$2.95  
Assorted Fruit Juices \$2.25  
Assorted Iced Soda \$2.25  
Spring Water \$2.00

#### **Baked Breakfast Pastries:**

Danish \$1.75  
Muffins \$1.50  
Croissants \$1.50  
Bagels \$1.75  
Homemade Cookies \$17.00  
Brownies \$18.00  
Assorted Yogurt \$1.75  
Starbucks Coffee & Decaf (per Pot) \$18.00  
Carafe of Assorted Juices \$17.00



*All food, beverage, and rooms are subject to 9% rooms and meals tax and a 21% service charge.*

*All Pricing subject to change.*



## LUNCHEON BUFFETS

### SALAD TRIO *\$17.95 per person*

Potato & Egg Salad  
Vegetable Pasta Salad  
Egg, Ham and Chicken Salad Sandwiches & Wraps  
Potato Chips  
Appropriate Accompaniments  
House Baked Cookies & Brownies  
Ice Tea & Lemonade

### THE DELI SANDWICH BOARD

*\$18.95 per person*

Garden Salad with Seasonal Dressing  
Potato & Egg Salad  
Breads, Brioche Rolls & Wraps  
Deli Meats  
Appropriate Condiments  
House Baked Cookies & Brownies  
Ice Tea & Lemonade

### ITALIAN LUNCH BUFFET *\$32.95 per person*

Garlic Toast  
Caesar Salad  
Chicken Parmesan  
Penne Pasta with Marinara  
Tortellini Alfredo  
Seasonal Vegetable Medley  
Cannolis or House Baked Cookies & Brownies  
Ice Tea & Lemonade

### CHEF'S CHOICE BISTRO BUFFET

*\$32.95 per person*

Garden Salad with Seasonal Dressing  
Warm Rolls & Butter  
Bistro Steak Au ju with Roasted Button Mushrooms  
Chicken, Broccoli Alfredo over Penne Pasta  
Baked Haddock with Cracker Crumb Topping  
Season Vegetable Medley  
Oven Roasted Red Bliss Potatoes  
House Baked Cookies & Brownies  
Ice Tea & Lemonade



*All food, beverage, and rooms are subject to 9% rooms and meals tax and a 21% service charge.*

*All Pricing subject to change.*

516 STEELE HILL ROAD | SANBORNTON, NEW HAMPSHIRE 03269 | (603) 581-2319



# CONFERENCE DINNER MENU

*\$31.95 per person*

## STARTERS *(Choice of one)*

Fresh Fruit Medley *or* Chef's Soup du Jour

## SALAD

House Garden Salad with Balsamic Vinaigrette

## ENTREES *(Choice of two)*

English cut Slow Roasted Prime Rib of Beef

Bistro Tender Steak Au Jus

Chianti Braised Boneless Short Rib of Beef

Grilled Pork Tenderloin with Mango Chutney

Chicken Marsala with roasted Button Mushrooms

Chicken Cordon Bleu – stuffed with Ham and Swiss with Supreme Sauce

Chicken Pomodoro – Baby Spinach, Artichokes Basil, and Tomatoes with Garlic White Wine Cream Sauce

Cilantro and Lime Grilled Chicken

Baked Stuffed Shrimp with Lemon Butter

Panko Herb Crusted Haddock with Citrus Buerre Blanc

Pan Fried Rainbow Trout with Casino Butter

Grilled Napoleon Vegetable Stack

Buffalo Mozzarella Ravioli with Roasted Vegetable Ragout

*All of the above served with chef's vegetable and potato or rice, fresh baked rolls with butter, choice of one appetizer and one dessert along with coffee, tea or decaf.*

## DESSERT *(Choice of one)*

Apple or Blueberry Pie

Chocolate Mousse

Seasonal Cheesecake

Strawberry Shortcake

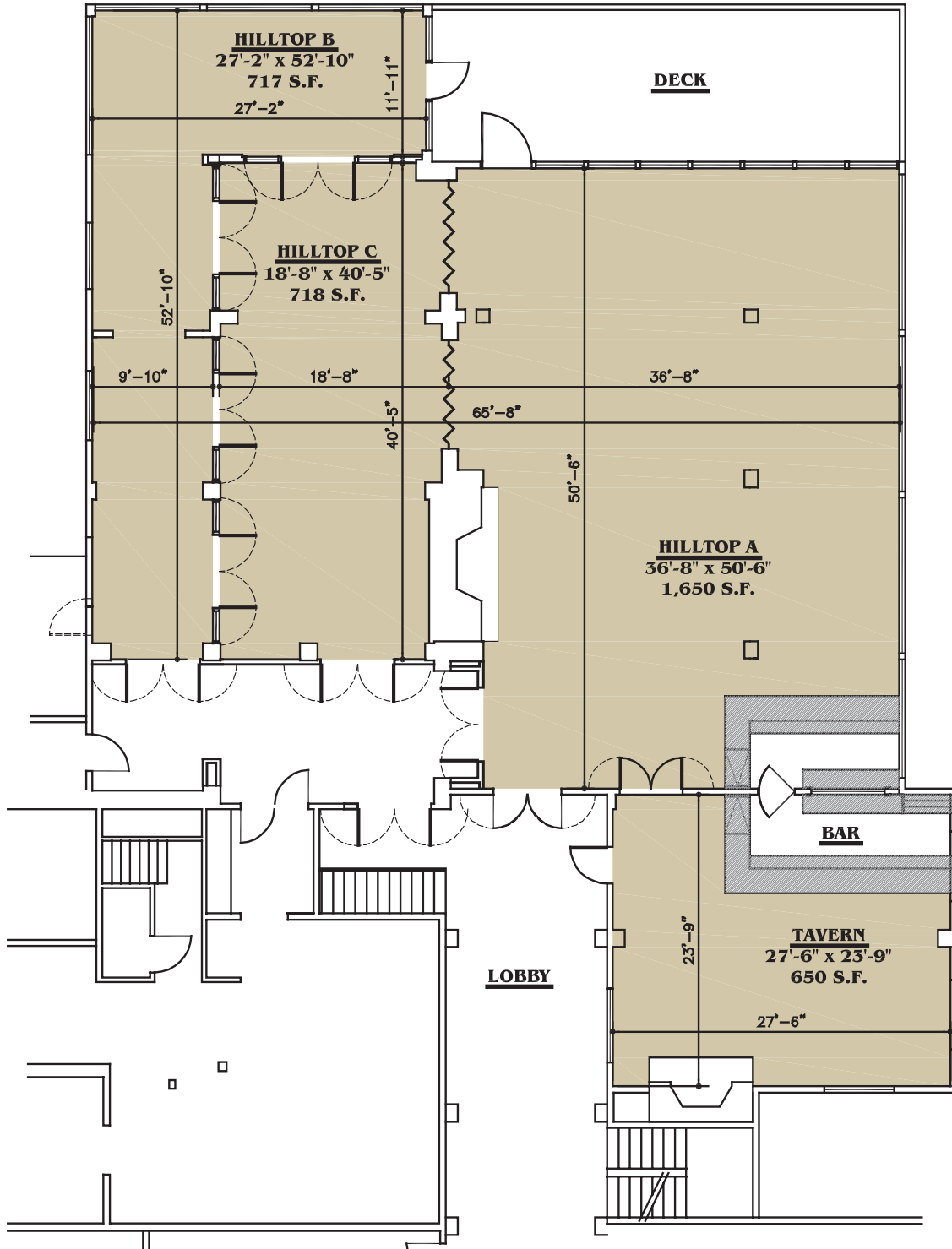


*All food, beverage, and rooms are subject to 9% rooms and meals tax and a 21% service charge.  
All Pricing subject to change.*

516 STEELE HILL ROAD | SANBORNTON, NEW HAMPSHIRE 03269 | (603) 581-2319



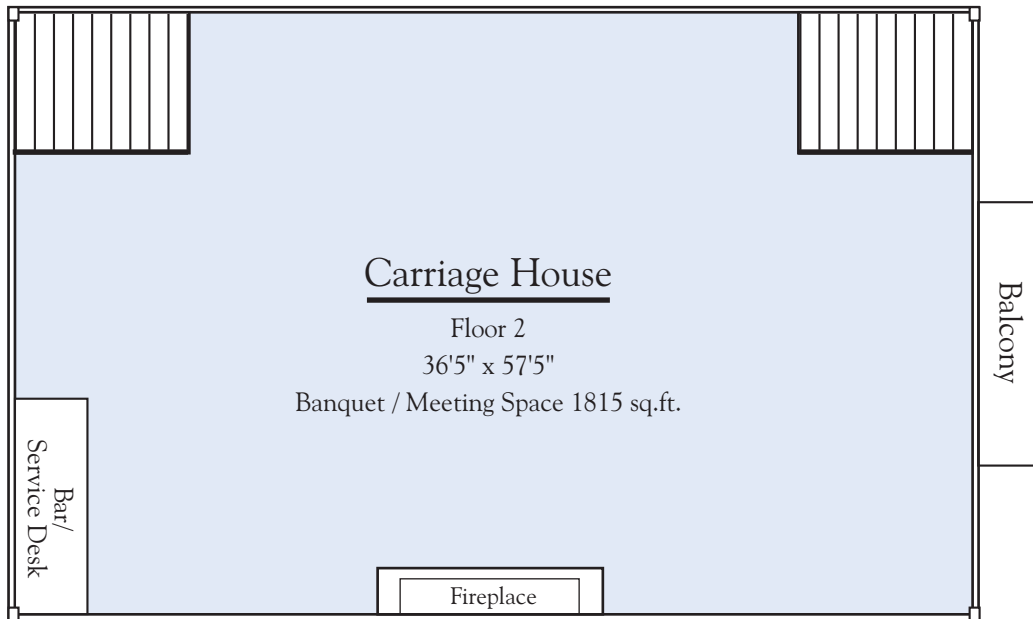
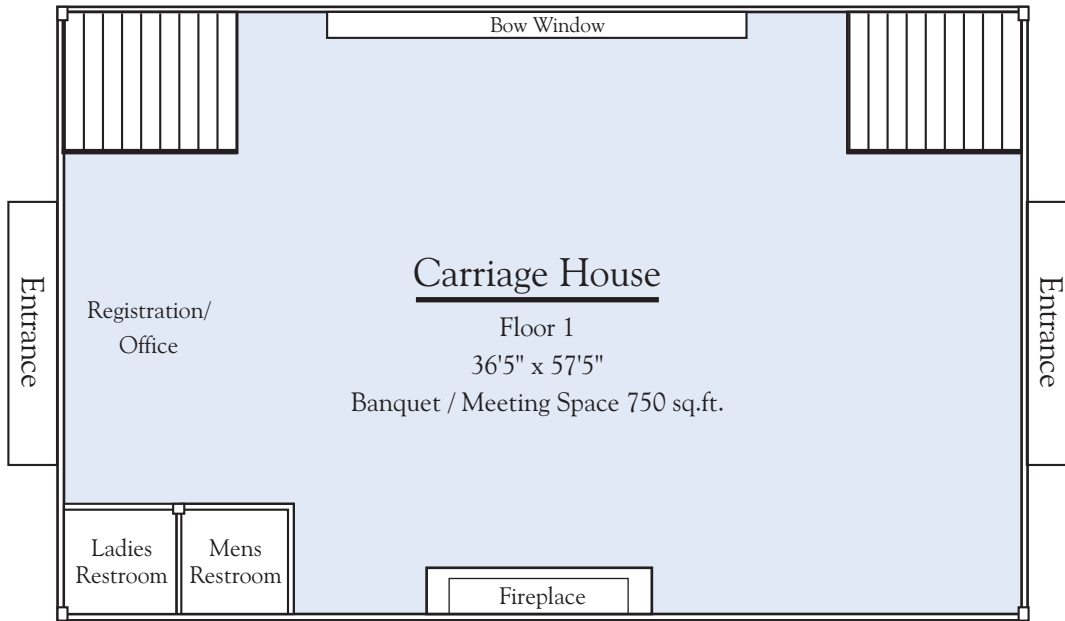
# HILLTOP FLOOR PLAN





# CARRIAGE HOUSE FLOOR PLANS

## VIEWS





# MEETING/BANQUET ROOM SPECIFICATIONS

Rooms available for meetings and functions are depicted on the chart below showing the room name, square footage and the maximum capacity as determined by the meeting room set-up. In addition, suites are available for smaller meetings and break-outs.

	<u>Theater</u>	<u>Classroom</u>	<u>Wedding Reception</u>	<u>Reception</u>	<u>Banquet</u>
<b>The Hilltop Room</b> <i>Rooms A, B &amp; C</i> 3085 sq. ft	n/a	n/a	180	325	200
<b>The Lakeview Room</b> 1650 sq. ft.	125	50	100	175	140
<b>The Mountain View Room</b> 715 sq. ft.	n/a	n/a	n/a	n/a	20
<b>The Belknap Room</b> 720 sq. ft.	30	25	n/a	50	48
<b>The Carriage House</b> <i>Floor 1</i> 750 sq. ft	40	n/a	n/a	30	20
<b>The Loft at The Carriage House</b> 1815 sq. ft	100	100	90	150	90
<b>The Lake View Tent</b> <i>Seasonal</i> 3200 sq. ft.	200	150	200	250	175